



1F

THE FUTURE STARTS WITH OUR MISSION

-
MISSION

02 VALUE SYSTEM
10 MASTERPIECES

2F

WE BUILD A RELIABLE WORLD THROUGH OUR VALUES

-
COMPANY PROFILE

20 CEO MESSAGE
22 HISTORY
24 BUSINESS AREAS
26 SUSTAINABILITY
27 HDC CORPORATE CITIZENSHIP
28 PONY CHUNG FOUNDATION
29 FINANCIAL HIGHLIGHTS

3F

WE CREATE A BETTER LIFE THROUGH OUR WORK

-
BUSINESS PORTFOLIO

32 DEVELOPMENT & OPERATION
38 HOUSING
44 ARCHITECTURE
52 INFRASTRUCTURE DEVELOPMENT
58 OVERSEAS BUSINESS

-
60 HDC NETWORK
62 HDC AFFILIATES

WHAT MAKES YOUR FUTURE BETTER?

HDC Hyundai Development Company has a firm belief in a better life. It's the belief that: we can provide satisfaction and emotional impression to our customers; we can contribute to local and social development; and we can create a happier future for all. To realize that belief, we constantly create new values, innovate the way we work and continue to challenge beyond perceived limitations. With a belief in a better life, we will create a more affluent life and a reliable world.

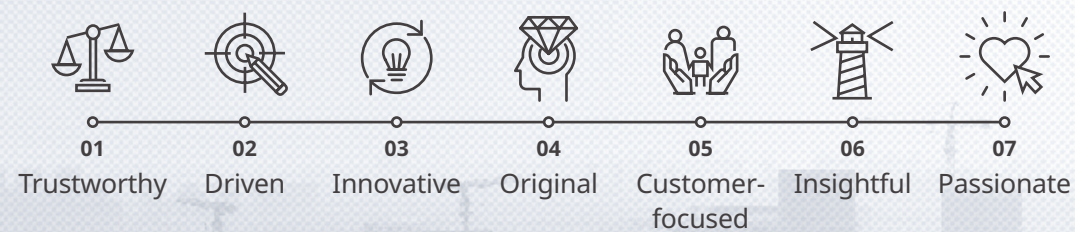
-
In-Jung Moon
Construction Management Division



MISSION

We deliver an affluent life
and a reliable world

CORE VALUES



VISION

A Comprehensive Financial &
Real Estate Company

We contribute to people's affluent and happy lives by creating
new values through connecting and fusing space and content.

We leap higher with different ideas
and constant innovation

As a comprehensive financial & real estate company,
HDC Hyundai Development Company will make an affluent life and a reliable world
through the creation of a unique architectural culture.

Faith in a Better Future **HDC**

1F. THE FUTURE STARTS WITH OUR MISSION

HDC Hyundai Development Company continues to challenge the status quo to create a better future for our customers and the world we live in. We will actively implement our core values and fulfill our customers' happiness and social development. This is how we are creating an affluent life and a reliable world.

—
Bo-Eun Yoon
Legal Affairs & Internal Audit Team



01

We think
and act properly
in accordance with
ethical principles.

Trustworthy

02

We seek balance
and harmony
from a broader
perspective.

Insightful



—
Sang-Joon Um
Business Analysis Team

03

We are
at the forefront
of constant change.

Innovative



—
Ji-Min Lee
Urban Development Team

04

We lead
the world with
what makes us
unique.

Original



—
Do-Hyung Youn
Finance Team



05

Our customers
are the reason
why we exist.

Customer-focused



07

We prioritize
passion over
everything we do.

Passionate



06

We make
systematic plans
and implement them
thoroughly.

Driven

HOUSING

A home is where the dreams are born and nurtured,
where happiness and hope for the future begin

SUMON IPARK CITY



HOUSING

A home is where the dreams are born and nurtured,
where happiness and hope for the future begin



HDC Hyundai Development Company has directed its undivided attention to housing construction. Our premium brand IPARK, which took more than 40 years to complete, realizes our dream of delivering happiness today and hope for tomorrow.

Unique amenities and thoughtful surroundings are what set IPARK apart. What's left is a lifestyle created by a range of features including: optimal location, artistic façade, panoramic views, rich greenery, delicate landscape, convenient layouts, various facilities, and white-glove service.

HOUSING

A home is where the dreams are born and nurtured,
where happiness and hope for the future begin

Construction period | Aug. 2009 – Jun. 2017

Architecture Design | Ben van Berkel (UN Studio)
Landscape Design | Lodewijk Baljon

SUWON IPARK CITY

Suwon IPARK CITY is a city composed of residential apartment complexes, a themed shopping mall, multi-purpose commercial facilities, public facilities, and ecological parks. The artistic façade was inspired by five unique motifs derived from nature and transformed each building into a living work of art. In addition, colorful island landscaping and neighborhood parks with natural streams complete the picture of a new concept for an eco-friendly, design-centric city.

Suwon's private urban development project

1st

Total number of households

6,658 units

Total length of ecological streams

2.5 km

Area of neighborhood parks and infrastructural facilities

469,391 m²

Total area

993,791 m²

ARCHITECTURE

Inspiring new sensations and experiences,
our creative architecture leads the way
for new and exciting changes in city living

GOCHOOK SKY DOME



ARCHITECTURE

Inspiring new sensations and experiences,
our creative architecture leads the way
for new and exciting changes in city living



HDC Hyundai Development Company achieved a new milestone for city planning through the creation of city that combines human-centered design with cutting-edge technology.

Gocheok Sky Dome is Korea's first domed stadium with 18,076 seats and world-class facilities and amenities including the latest in air conditioning, lighting, and playing field design. Its unique and beautiful appearance, along with safe and comfortable surroundings and facilities, delivers an experience that is unique to both athletes and spectators.

GOCHEOK SKY DOME

ARCHITECTURE

Inspiring new sensations and experiences,
our creative architecture leads the way
for new and exciting changes in city living

Construction period | Mar. 2009 – Nov. 2015

GOCHEOK SKY DOME

Completed in 2015, Gocheok Sky Dome is Korea's first domed stadium. This new complex is the center for Korean baseball and the host for athletic and cultural events in Seoul. Thanks to the development of the domed baseball field, Korean baseball fans can now enjoy watching baseball games, and other large-scale events all-year-round, regardless of the weather. The dome is loved as a performing arts center among Korean and foreign artists and is recognized as the cultural center of southwest Seoul.

Domed baseball stadium in Korea

1st

Longest length of structure

215_m

Seating capacity

18,076_{seats}

Building height

67.59_m

CIVIL WORKS

By building an infrastructure that raises the value of a nation, we directly contribute to the balanced development of society and the improvement of people's convenience and accessibility

CIVIL WORKS

By building an infrastructure that raises the value of a nation, we directly contribute to the balanced development of society and the improvement of people’s convenience and accessibility



HDC Hyundai Development Company is capable of contributing at every step in the construction process, from design to construction, management to full-scale operation, all with a strong sense of responsibility and commitment. The result is the creation of a social infrastructure that anyone can use with confidence.

The opening of the Busan Harbor Bridge, which connects Cheonghak-dong, Yeongdo-gu, and Gamman-dong, Nam-gu, in Busan, marked the completion of the coastal circulative road network from Gyeongbu Expressway to Gwangsan Grand Bridge and the Geoga Grand Bridge. The bridge has helped to drastically reduce logistics cost and ease traffic congestion within the city. It beautifully lights up the sea at night, which is beloved by the citizens of Busan and its visitors.

BUSAN HARBOR BRIDGE

CIVIL WORKS

By building an infrastructure that raises the value of a nation, we directly contribute to the balanced development of society and the improvement of people’s convenience and accessibility

Construction period | Apr. 2007 – May 2014

BUSAN HARBOR BRIDGE

Opened in 2014, Busan Harbor Bridge is the longest cable stayed composite bridge in Korea with a length of 1,114m. The bridge boasts the highest safety quality with its first-class earthquake-resistant design, diamond-type pylons, special cables with a narrow diameter, and fairing that induces air flow. The utilization of state-of-the-art technology and engineering techniques have enabled the bridge to withstand strong winds. The two 190-meter-high pylons were designed to have a clearance of 60 meters from sea level to the bottom of the bridge, in order for large ships to safely pass underneath it.

Korea’s longest cable stayed composite bridge

1st

Distance between two pylons

540 m

Bridge length

1,114 m

Number of cables

160

Total length

3,331 m

INFRASTRUCTURE DEVELOPMENT

Instilled with advanced technology and experience, our plant business represents the foundation for industry development and injects it with vitality

SAMCHEONPO THERMAL POWER PLANT



INFRASTRUCTURE DEVELOPMENT

Instilled with advanced technology and experience, our plant business represents the foundation for industry development and injects it with vitality



HDC Hyundai Development Company leverages its proprietary technology and industry expertise to successfully construct plants for power generation, industries and the environment, which contribute to the growth of the national economy and the modern convenience we enjoy on a daily basis.

Samcheonpo Thermal Power Plant is the first large-scale thermal power plant to be constructed in Korea. It produces 6.9 billion kWh of electricity per year from six thermal power generating units, and supplies energy to nearby Changwon and Yecheon industrial complexes. Its stable power generation contributes to the reliable maintenance of Korea's power system and the development of the national infrastructure industry.

SAMCHEONPO THERMAL POWER PLANT

INFRASTRUCTURE DEVELOPMENT

Instilled with advanced technology and experience, our plant business represents the foundation for industry development and injects it with vitality

Construction period | Oct. 1978 – Aug. 1983 (Unit 1), Feb. 1984 (Unit 2) | Oct. 1989 – Apr. 1993 (Unit 3), Mar. 1994 (Unit 4)
Mar. 1994 – Jul. 1997 (Unit 5), Jan. 1998 (Unit 6)

SAMCHEONPO THERMAL POWER PLANT

Samcheonpo Thermal Power Plant is the largest thermal power plant in Korea and took about 20 years to construct starting with Unit 1, completed in 1983, to Unit 6, completed in 1998. The plant has the ability to produce 3,240MW in thermal power, which includes 4 units of 560MW and 2 units of 500MW. The plant also has a dedicated dock for a bituminous coal transportation vessel, coal depot for 800,000-ton capacity, and various pollution prevention facilities. In particular, the unique, geometric shape of the 200-meter-high chimney stacks boasts a magnificent and beautiful appearance, as well as being recognized as a symbol of the power plant.

Korea's largest thermal power plant

1st

Facility capacity

3,240 MW

Area

2,782,982 m²

Coal depot storage capacity

800,000 tons

Annual power output

6,900,000,000 kWh



2F.

WE BUILD A RELIABLE WORLD THROUGH OUR VALUES

HDC Hyundai Development Company is building a comprehensive financial & real estate company based on its industry-leading financial integrity, profitability and brand value. At the same time, we will continue to work together with all stakeholders, including customers, employees, business partners, and the local community, to grow and realize our vision for a more reliable world.

20
CEO
MESSAGE

22
HISTORY

24
BUSINESS
AREAS

26
SUSTAINABILITY

27
HDC CORPORATE
CITIZENSHIP

28
PONY CHUNG
FOUNDATION

29
FINANCIAL
HIGHLIGHTS



As a comprehensive financial & real estate company,
we create more affluent space & new investment
values.

HDC Hyundai Development Company is a comprehensive real estate and infrastructure group that provides a richer life to customers and presents various lifestyles and cultural experiences. Starting with the construction of the Appu-jeong Hyundai Apartment Complex, HDC Hyundai Development Company has supplied housing for approximately 400,000 households, bringing a new paradigm to Korea's housing culture. It also constructed landmarks in various places throughout the nation, infusing new energy into countless cities. In addition to various construction projects, it continued to successfully carry out engineering and power plant projects in Korea and overseas, thereby contributing to Korea's economic development and making customers' lives more convenient.

With its subsidiaries, HDC Hyundai Development Company will become the strongest #1 developer and create a better tomorrow by evolving into a "customer-oriented company" that contributes to the community and society by safely providing high-quality services in various fields such as manufacturing, distribution, IT, leisure, hospitality and more, with construction at its core. It will also mature into a "transparent and honest company" that ceaselessly makes great efforts to improve itself along with the customers, employees and partner companies through a higher level of ethical and sustainable management. Last but not least, it will advance as a "comprehensive real estate and financial company" that is in the process of completing a new business platform by combining financial services with the know-how it accumulated through real estate and infrastructure development.

Choi Ik Hoon - CEO of HDC Hyundai Development Company

A handwritten signature in black ink, reading "I H Choi".

HISTORY

Leading the innovation of the construction industry for over 40 years, HDC Hyundai Development Company has become Korea's exemplary developer. With a firm belief in a better life, we strive to become a comprehensive financial & real estate company that contributes to the happiness of our customers and social development by creating a new architectural culture.

1976

- 1976 Established the Korea Urban Development Co., Ltd.
- 1977 Established the Halla Engineering & Construction Co., Ltd.
- 1983 Registered as an issuer of securities
- 1984 Halla Engineering & Construction Co., Ltd. completed units 1 and 2 at the Samcheonpo Thermal Power Plant
- 1986 Established the Hyundai Development Company Co., Ltd. by merging Halla Engineering & Construction Co., Ltd. and Korea Urban Development Co., Ltd.
- 1987 Completed the 14th Hyundai Apartments at the Apgujeong Hyundai Apartment Complex
- 1988 Entered Petrochemical industry (now, HDC Hyundai EP Co., Ltd.)
- 1989 Won the top prize in a design competition for the Bundang New Town Model Complex
- 1990 Entered the reconstruction business and began tenant pre-inspections for the first time in South Korea
- 1991 Established HDC Technology Research Institute
- 1991 Completed and launched Hyundai Seorak Condominium (now, IPARK Condominium)
- 1991 Constructed Korea's first 30-story apartment (Bundang Hyundai Apartment)
- 1992 Changed the company name to Korean (현대산업개발)
- 1992 Won the main prize in the Housing category at the 1st Korean Architecture Awards
- 1993 Completed Yeosu PC plant (now, HDC Hyundai PCE Co., Ltd.)
- 1994 Completed units 3 and 4 at Samcheonpo Thermal Power Plant
- 1994 Hosted the 1st Student Design Contest for Apartment Buildings
- 1994 Updated its corporate identity
- 1994 Obtained ISO 9001 certification
- 1995 Won the grand prize at the Quality Control Award
- 1995 Established Customer Satisfaction Center
- 1996 Listed on stock exchange and updated its corporate identity
- 1997 Changed the English name to Hyundai Industrial Development & Construction Co., Ltd.
- 1997 Won the grand prize of the 2nd Most Livable Apartment Awards by Maeil Business (Busan Haeundae Hyundai Apartment)
- 1997 Obtained ISO 14001 certification
- 1997 Won "IR52 Jang Young-sil Prize" (Fundamental technology for ultra-high-strength PCs)
- 1997 Obtained the Nuclear Quality Assurance Certification
- 1998 Received Korean Institute of Architects Award
- 1998 Won the grand prize for the eco-friendly management of construction sites from the Korea Expressway Corporation (District 5 for Jungang Expressway from Andong to Yeongju)
- 1998 Won the grand prize of the 7th Korean Architecture Awards (Ulsan Hyundai Arts Center)
- 1999 Established Hyundai Station Co., Ltd. as an affiliate (now, HDC IPARKMALL Co., Ltd.)
- 1999 Inaugurated Se-Yung Chung as Late Honorary Chairman and Mong-Gyu Chung as Chairman
- 1999 Changed the English name to Hyundai Development Company
- 1999 Became independent from Hyundai Group
- 1999 Established I Controls Co., Ltd. as an affiliate (now, HDC I-Controls Co., Ltd.)
- 1999 Acquired Facility Management Korea (now, HDC I-Service Co., Ltd.)

2000

- 2000 Established Hyundai Engineering Plastics Co., Ltd. as an affiliate (now, HDC Hyundai EP Co., Ltd.)
- 2000 Updated its corporate identity and announced a new slogan, "Think Innovation"
- 2000 Established I&Cons Co., Ltd. as an affiliate (now, HDC I&Cons Co., Ltd.)
- 2000 Acquired Busan Daewoo Royals professional football team and founded Busan Icons (now, Busan IPARK) professional football team
- 2000 Established I Investment Trust Management Co., Ltd. as an affiliate (now, HDC Asset Management Co., Ltd.)
- 2001 Launched IPARK, a residential apartment brand
- 2002 Won the grand prize of the 2002 POSCO Steel Structure Awards (I-TOWER, now, Gangnam Finance Center)
- 2002 Won the gold prize of the Architecture Awards by Daejeon Metropolitan City (Daejeon World Cup Stadium)
- 2002 Won the gold prize of the Landscape Design Awards by Seoul Special Metropolitan City (I-TOWER, now, Gangnam Finance Center)
- 2002 Won the top prize in the Design Competition for Dongtan New Town, Hwaseong
- 2003 Established Busan Icons Co., Ltd. as an affiliate (now, HDC Sports Co., Ltd.)
- 2003 Developed an integrated brand "IPARK" for residential and commercial buildings
- 2003 Introduced the industry's first electronic proof-of-performance system
- 2004 Obtained Korea's first certificate for eco-friendly architecture (Samseongdong IPARK)
- 2004 Won the Prime Minister's Award of the 8th Most Livable Apartment Awards by Maeil Business (Deungchondong IPARK)
- 2004 Established IPARK Volunteer Group
- 2004 Established the industry's first cyber training system for quality control (I'Quality)
- 2005 Completed IPARK Tower
- 2005 Established Hotel IPARK Co., Ltd. as an affiliate (now, Hotel HDC Co., Ltd.)
- 2005 Opened PARK HYATT SEOUL
- 2005 Established Pony Chung Foundation
- 2006 Acquired Young Chang Musical Instrument Co., Ltd. (now, HDC Youngchang Co., Ltd.)
- 2006 Listed Hyundai EP Co., Ltd. (now, HDC Hyundai EP Co., Ltd.) on stock exchange
- 2006 Celebrated its 30th anniversary
- 2006 Won the grand prize from the Minister of Construction and Transportation at the 2nd Korea Civil & Architecture Technology Awards (New expressway from Daegu to Busan)
- 2007 Recognized as Excellent Construction Apartment by Gwangju Metropolitan City (Gwangju Yongbong IPARK) 2006
- 2007 Won the Prime Minister's Award of the 11th Most Livable Apartment Awards by Maeil Business, in addition to the Prime Minister's Award (Deokso IPARK)
- 2007 Won the participation prize from the Seoul Social Welfare Competition (IPARK Volunteer Group)
- 2008 Opened Pony Chung Hall I
- 2008 Won the grand prize in Residential Environment Design category from the 2008 Korea Public Design Awards (Suwon IPARK CITY)

2010

- 2010 Received the Bronze Tower Order of Industrial Service Merit by the Korean government (New Port, Busan Harbor, phase 1-2 waterway construction site)
- 2010 Won the Minister Award from the Ministry of Environment at the 10th Natural Environment Awards by the Korea Association of Environmental Planning & Landscape Architecture in partnership with the Ministry of Environment (Masanman IPARK, an urban environment development project situated along the coast)
- 2011 Won the grand prize for the 2011 Construction Quality Management by the Korea Construction Quality Association
- 2011 Relocated its headquarters to Yongsan IPARKMALL
- 2012 Updated its corporate identity
- 2012 Received the Prime Minister's citation at the celebration of the 45th Science Day (technology for fire-resistant curtain walls for skyscrapers and other buildings)
- 2012 Established Vietnam Branch
- 2012 Won the Presidential Award of the 16th Most Livable Apartment Awards by Maeil Business (Suwon IPARK CITY)
- 2012 Received the Bronze Tower Order of Industrial Service Merit by the Korean government (New Port, Busan Harbor, and phase 2-3 of a private sector investment project)
- 2012 Won the Presidential Award and Minister Award from the Ministry of Land, Transport and Maritime Affairs at the 2012 Korean Architecture Awards (Haeundae IPARK and Daum Space.1)
- 2012 Won the integrated grand prize of the 2012 Hankyong Residential Culture Awards in the second half of the year (Suwon IPARK CITY)
- 2013 Opened PARK HYATT BUSAN
- 2013 Hosted the 1st Green Technology Competition
- 2013 Won the top prize of the 13th Natural Environment Awards (Suwon IPARK CITY, the urban environment development project in Woosijang stream)
- 2014 Established South American Branch in Banegas, Bolivia
- 2014 Established Hyundai PCE Co., Ltd. as an affiliate (now, HDC Hyundai PCE Co., Ltd.)
- 2014 Won the grand prize in the Civil category of the 10th Korea Civil & Architecture Technology Awards (Busan Harbor Bridge)
- 2015 Established HDC Shilla Duty Free Co., Ltd. as an affiliate
- 2015 Listed I Controls Co., Ltd. on stock exchange (now, HDC I-Controls Co., Ltd.)
- 2015 Opened Suwon IPARK Museum of Art (SIMA)
- 2015 Opened Pony Chung Hall II
- 2016 Launched Shilla IPARK Duty Free
- 2016 Announced HDC Group's value system and a new corporate slogan, "Faith in a Better Future", honouring its 40th anniversary
- 2016 Announced the apartment brand IPARK's slogan: Imagine IPARK
- 2017 Awarded the Management Grand Awards by the Korea Management Association (Chairman Mong-Gyu Chung)
- 2017 Established HDC Private Rental Housing, No.1 real estate investment trust
- 2018 Opened PARK ROCHE Resort & Wellness
- 2018 Acquired Real Estate 114 Co., Ltd. as an affiliate
- 2018 Divided Hyundai Development Company into HDC Holdings Co., Ltd. and HDC Hyundai Development Company Co., Ltd.
- 2019 Seoul Chuncheon Highway Co., Ltd incorporated as affiliate
- 2019 Acquired Oak Valley Resort and changed its name to HDC Resort Co., Ltd

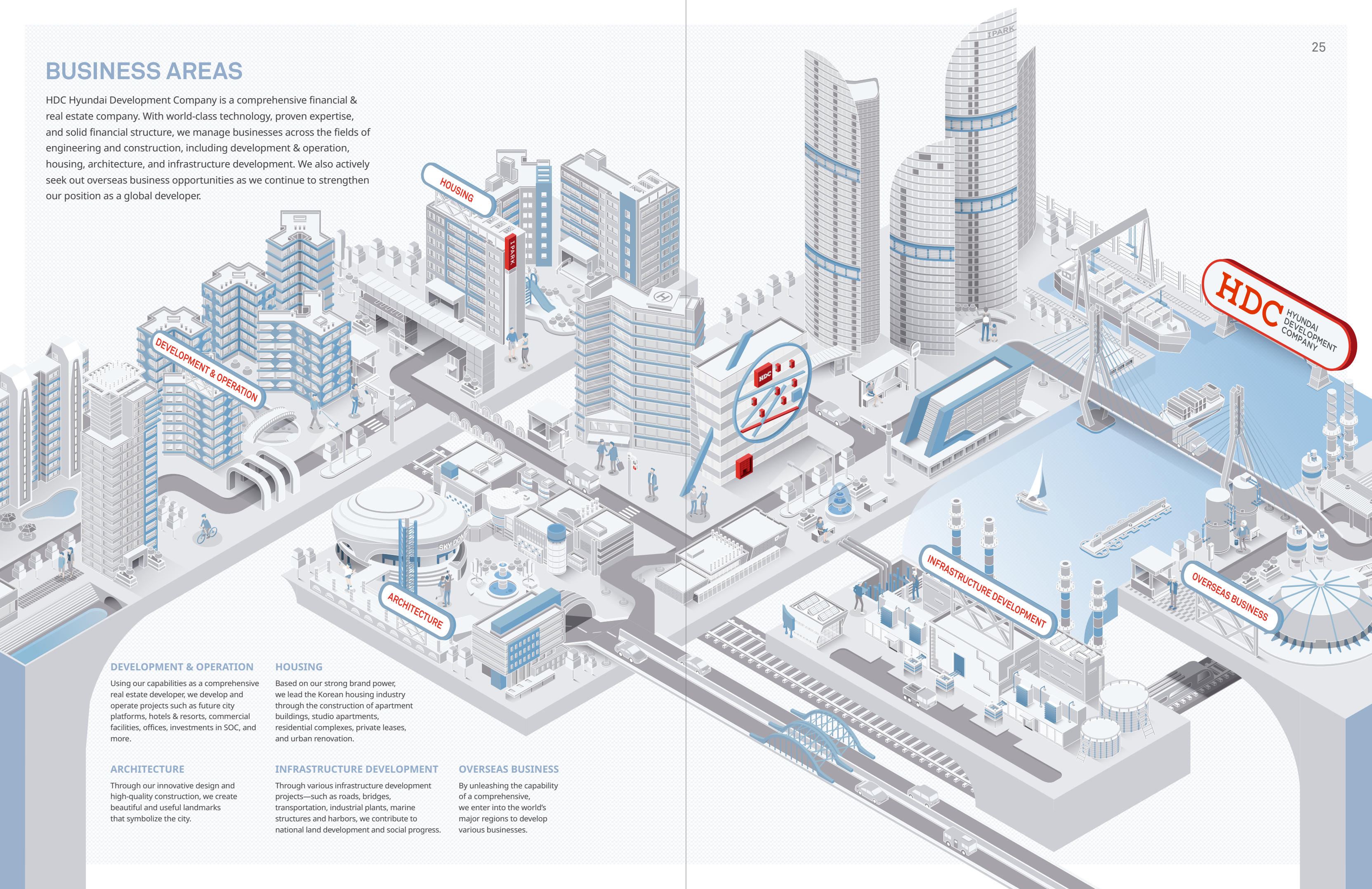
2020

- 2020 Launched the "My Homie" app, a service platform for residents
- 2020 Held the 1st Technology Proposal Contest
- 2021 20th Anniversary of apartment brand IPARK launch, implemented a renewal
- 2021 Implemented "HDC Dream Developer," a talent training program for future urban development
- 2022 Appointed new CSO and restructured Safety and Quality Office
- 2022 Operated a Safety and Health Committee within the board, launched the Construction Innovation Team
- 2022 Operated HDC SAFETY-I ACADEMY
- 2022 Completed Gocheok IPARK, Korea's largest public-funded private rental housing



BUSINESS AREAS

HDC Hyundai Development Company is a comprehensive financial & real estate company. With world-class technology, proven expertise, and solid financial structure, we manage businesses across the fields of engineering and construction, including development & operation, housing, architecture, and infrastructure development. We also actively seek out overseas business opportunities as we continue to strengthen our position as a global developer.



DEVELOPMENT & OPERATION

Using our capabilities as a comprehensive real estate developer, we develop and operate projects such as future city platforms, hotels & resorts, commercial facilities, offices, investments in SOC, and more.

ARCHITECTURE

Through our innovative design and high-quality construction, we create beautiful and useful landmarks that symbolize the city.

HOUSING

Based on our strong brand power, we lead the Korean housing industry through the construction of apartment buildings, studio apartments, residential complexes, private leases, and urban renovation.

INFRASTRUCTURE DEVELOPMENT

Through various infrastructure development projects—such as roads, bridges, transportation, industrial plants, marine structures and harbors, we contribute to national land development and social progress.

OVERSEAS BUSINESS

By unleashing the capability of a comprehensive, we enter into the world's major regions to develop various businesses.

SUSTAINABILITY

HDC Hyundai Development Company is committed to fulfilling its social responsibilities to all stakeholders, including customers, employees, business partners, and local communities. We are realizing our dreams for a better future together.

ETHICAL MANAGEMENT

HDC Hyundai Development Company regards ethical management as our highest priority in managing the company and carrying out business activities. The standard of judgment for all tasks is set to the code of ethics, and we are practicing ethical management where all employees work in a transparent, fair and reasonable manner. We enacted the "Code of Ethics" and "Practice Guidelines" as the standard for the proper actions and value judgment that all employees must comply with. Based on this, various activities are being conducted, instilling a sense of ethics into all employees.

Furthermore, we have established the Compliance System to prevent anyone from violating the laws and regulations related to the company's business activities, going against company rules and standards, or clashing with the society's ethical expectations. We will detect early on a potential offense and effectively deal with it. Starting with adopting the Compliance Program in 2017, we determined the compliance standard and appointed a compliance officer. We also required all employees to abide by the ethical practice guidelines and completed the compliance operating system. Through compliance education and ethical management activities combined with social contribution, we are doing our best to firmly establish the Compliance System within our company culture.

ENVIRONMENTAL MANAGEMENT

To achieve sustainable growth that contributes to the harmonious development of people, society and the environment, we are helping to reduce greenhouse gas emission and recycle resources through eco-friendly business projects and technological development. In addition, we are providing a safe and pleasant living environment for the members of society by preventing environmental problems that can occur during construction work, managing the site well so the surrounding area and the local residents do not suffer any damage, by using ecofriendly materials and building environmentally friendly structures. We promise to continue to carry out corporate social responsibilities by complying with the environmental standards and regulations, faithfully executing the requests of the people concerned, and transparently disclosing the outcome of environmental management.

SAFETY MANAGEMENT

To strengthen technological competitiveness in safety and quality, and to establish an accident prevention system, HDC Hyundai Development Company is reinforcing Check & Balance as well as pre-emptive prevention activities. We are preventing disasters by expanding Comprehensive Detailed Inspection, finding the root cause of accidents and improving upon it, closely managing risks per rating and standardizing risk management. Furthermore, we have established an integrated risk management system by building an RM (Risk Management) system, conducting risk monitoring, carrying out intensive management on high risk groups and operating the Construction Innovation Team consisting of experts outside the company. HDC Hyundai Development Company will create a culture that practices safety and health while considering the workers' safety top priority, establish a pleasant work environment and realize a zero-incident and zero-defect workplace.

MUTUALLY BENEFICIAL MANAGEMENT

For the mutual growth with partner companies, HDC Hyundai Development Company is systematizing sustainable supply chain management, and operating a system for a win-win coexistence with partner companies. We are supporting the field of finance, technology and education, expanding communication channels through which we can collect the opinions of partner companies, and increasing incentives for outstanding partner companies. HDC Hyundai Development Company proclaimed the Fair Trade Declaration and concluded a mutual Fair Trade Pledge with partner companies. In addition, we tightened the reward and punishment policy by reinforcing the penalty standard when a breach in the Fair Trade Pledge or the contract occurs. Along with continuous feedback, through regular employee education, we are doing our best so that the fair trade culture can be incorporated into our way of business.



HDC CORPORATE CITIZENSHIP

HDC Hyundai Development Company established a social contribution committee and launched HDC Volunteer Group in March 2004, which was designed to implement social contribution activities in a more systematic and active manner.

HDC VOLUNTEER GROUP

Since its inauguration in 2004 as IPARK Volunteer Group, HDC Volunteer Group has voluntarily participated in a range of activities as our employees' voluntary participation has been the core of its programs. Relaunched as HDC Volunteer Group in 2017, we are expanding our volunteering activities for community development through our slogan, "Faith in a Better Future," as the theme of our social contribution activities. We also continue to contribute to the society through our "Pennies for Love" campaign, which donates a portion of employees' salary, and also donations to public service projects such as those of Pony Chung Foundation.

Furthermore, to pass on the legacy of Chung Se-Yung, Honorary Chairman of Hyundai Development Company, and his people-centric philosophy, we have opened 14 libraries in line with the Symphony Small Library Project, a program that donates books and talent, to help students nurture their dreams through books. Through programs targeting college students such as Online Job Talk and HDC Dream Developer, we provide opportunities for young people, who will lead this era, to grow as a member of society by means of mentoring and education. In addition, we are carrying out the "Love Sharing Relay" campaign, which is volunteer work for the people in our local community. Moreover, when a sudden disaster strikes in the local community, we immediately send support to fulfill our duty as a member of society. In particular, we do not stop at only making financial donations, but we carry out volunteer work that reflects the characteristics of our businesses, providing aid in construction, wall-papering, technical assistance and more.

MAJOR SOCIAL CONTRIBUTION PROGRAMS

- Pennies for Love campaign
- Symphony Small Library
- Love Sharing Relay
 - Wall Painting for Love
 - Carrying coal briquettes
- Online Job Talk (Job mentoring program for college students)
- HDC Dream Developer (Opportunity for college students to receive training on development work and participate in projects)
- Donations
 - Pony Chung Foundation
 - Rehabilitation support for households suffering from flood damage due to localized torrential rain



Pennies for Love campaign



Symphony Small Library



Wall Painting for Love



Rehabilitation support for households suffering from flood damage due to localized torrential rain

PONY CHUNG FOUNDATION

Pony Chung Foundation helps to address the challenges that our society faces and supports the flourish of innovation in order to create a promising future for the next generation of bright minds. We continue to uphold the Honorary Chairman Se-Yung Chung's legacy that "The future is not for those who wait, but for those who challenge and pioneer."

PROGRAMS

INNOVATION AWARD

Pony Chung Innovation Award is presented to individuals and organizations that have contributed to social development and raised the honor of the country. Awardees are those who have high achievements and have brought positive change to people through creative thinking and challenging ideas. The category includes diplomacy, economy, society, culture, and the arts.

ACADEMIC GRANTS

Our academic grants include: Young Scholar Grant which supports researchers in the humanities and liberal arts with academic research funding, which is selected by public contest; Pony Chung Fellowship which supports foreign Korean Studies researchers; the RIKS Academy which supports research and the exchange of graduate researchers on Korean studies at home and abroad in an alliance with the Research Institute of Korean Studies (RIKS) of Korea University; and the Pony Chung Humanities School that supports scholarly research on East Asian studies in partnership with the Seoul National University's Center for East Asian Studies.

SCHOLARSHIPS

Main projects include the Pony Chung Scholarship for Humanities Research that provides research funds to graduate students majoring in the humanities in schools in Korea and abroad, a Vietnam Scholarship that specifically supports Vietnamese university students, and special scholarships that support upcoming young talents in the arts and soccer.

PONY CHUNG YOUNG LEADER AWARD

The Pony Chung Young Leader Award has been created to find and foster young, talented individuals with the spirit of challenge and innovation who can lead the 4th Industrial Revolution era. The award is presented annually to two individuals under 40 years of age with a record of excellence in their fields and great potential for their future, as well as show promise of leading South Korea's future.

PONY CHUNG COMMEMORATIVE PROJECTS

To foster talents who will pursue and further reinforce Pony Chung's philosophy and pioneering spirit, we carry out various commemorative projects. The leading project is the Pony Chung Design Academy program with FOMA (Forms of Motors and Arts), which directly passes on the know-how of innovation through diverse curricula. We are also operating a research project to explore the meaning Pony Chung's legacy and the path he took had on Korea's modern history and management, and expand that study to academic research in the future.

SE-YUNG CHUNG, A TRUE LEADER OF INNOVATION AND A CHALLENGER OF OUR TIME

Known for his nickname, "Pony Chung," Honorary Chairman Se-Yung Chung was the most innovative and challenge-minded entrepreneur. With the belief that "The future is not for those who wait, but for those who challenge and pioneer," he developed Korea's first original automobile "Pony." He continued to innovate through automotive exports, R&D, and industrial development, making Korea as one of the world's leading automotive powerhouses. Driven by the management philosophy of recognizing key talent, he actively fostered those who showed great promise of becoming future leaders. And he lived up to his ethical management by observing his own principles and beliefs. Founded in 2005, Pony Chung Foundation continues to honor and preserve Se-Yung Chung's legacy through various projects. Moving forward, we encourage our society to continue its innovation and support for cultivating human resources. We will be the forerunners of change and will undertake the creation of a brighter future.



PAST INNOVATION AWARD WINNERS

- 2007 1st Winner Ki-moon Ban, UN Secretary General
- 2008 2nd Winner Nam-pyo Suh, President, KAIST
- 2009 3rd Winner World Canaan Farmers' Movement
- 2010 4th Winner In-pyo Cha and Ae-ra Shin, Compassion Korea ambassadors
- 2011 5th Winner Ha-joon Chang, Professor, University of Cambridge
- 2012 6th Winner Beom-su Kim, Chairman of the Board of Directors at Kakao, Inc
- 2013 7th Winner Jeannie C. Suk, Tenured Professor, Harvard Law School
- 2014 8th Winner Yuna Kim, 2010 Vancouver Winter Olympics Gold Medalist
- 2015 9th Winner Giorgetto Giugiaro, Industrial Designer
- 2016 10th Winner Seong-jin Cho, Pianist
- 2017 11th Winner John Cook-jong Lee, Director of the Ajou University Hospital Trauma Center
- 2018 12th Winner Father Ha-jong Kim, Representative of Anna's House
- 2019 13th Winner You-Jeong Chang, Musical & Movie Director
- 2020 14th Winner Si-Hyuk Bang, CEO & Chairman of Big Hit Entertainment
- 2021 15th Winner Lee Sang-Yup, Distinguished Professor of KAIST
- 2022 16th Winner Hwang Dong-Hyuk, Film Director

PAST YOUNG LEADER AWARD WINNERS

- 2020 1st Winner Kim Seul-A (Sophie Kim), CEO of Kurly Inc.
- 2021 2nd Winners Kim Yeon-Koung, Former Korean National Volleyball Team Player
Lee Seung-Gun, CEO of Viva Republica Inc.
- 2022 3rd Winners Kim Hye-Yeon (Leo Kim), CEO of N.Thing Inc.
Son Yeol-Eum, Pianist



PONY CHUNG'S CHRONOLOGY

- 1928 Born in Tongcheon, Gangwon-do, Korea
- 1953 Graduated from Korea University (B.A. in Political Science & International Relations)
- 1957 Graduated from Miami University, Ohio, USA (M.A. in Political Science)
- 1967 Founded Hyundai Motor Company and was inaugurated as its first president
- 1974 Participated in Turin International Auto Show with Korea's first original model, Pony
- 1976 Started to mass produce Hyundai Pony and began exporting it to Ecuador
- 1983 Named as Honorary Commander of the Order of the British Empire (CBE)
- 1983 Received the first honorary degree of Doctor of Laws for a foreign graduate from Miami University, Ohio, USA
- 1986 Named as one of the "Hidden Heroes of the Industry" by The New York Times
- 1987 Inaugurated as Chairman of Hyundai Group and Hyundai Motor Company
- 1995 Received Asia's Top Businessman of the Year Award from Automotive News
- 1999 Inaugurated as Honorary Chairman of Hyundai Development Company
- 2005 Passed away at age 78

FINANCIAL HIGHLIGHTS

HDC Hyundai Development Company continues to grow with our industry-leading financial integrity and steady increase in revenue and profitability. Through our systematic approach to crisis management, we will respond effectively to changes in our management structure and actively pursue new businesses, further enhancing the performance of our company.

FINANCIAL STATEMENT

Unit: KRW Billion, As of 2021



CREDIT RATING

As of 2021

Rating Agency	Korea Investors Service	Korea Ratings	NICE Investors Service
Corporate Bond (CB)	A+	A+	A+
Commercial Paper (CP)	A2+	A2+	A2+

3F.

WE CREATE A BETTER LIFE THROUGH OUR WORK

HDC Hyundai Development Company implements projects such as development operation, housing, architecture, and infrastructure development at home and abroad. Our creative thinking, superior competence, and rich experience will pave the way to an enriched life everyone dreams of. This will be realized by finding new values, contributing to the development of society, and innovating people's lives.

32 DEVELOPMENT & OPERATION

FUTURE CITY PLATFORMS
HOTEL & RESORT DEVELOPMENT AND OPERATION
COMMERCIAL FACILITY & OFFICE INVESTMENT AND OPERATION
SOC INVESTMENT

38 HOUSING

APARTMENT, STUDIO APARTMENT & RESIDENTIAL COMPLEX
PRIVATE LEASE
URBAN RENOVATION

44 ARCHITECTURE

OFFICE
COMMERCIAL BUILDING & HOTEL
EDUCATION FACILITY & HOSPITAL
CULTURAL & SPORTS FACILITY
FACTORY & OTHERS

52 INFRASTRUCTURE DEVELOPMENT

ROAD & BRIDGE
RAILROAD & SUBWAY
PLANT
MARINE STRUCTURE,
HARBOR & OTHERS

58 OVERSEAS BUSINESS



DEVELOPMENT & OPERATION

ALL-ROUND DEVELOPER

[FUTURE CITY PLATFORMS](#)

[HOTEL & RESORT DEVELOPMENT AND OPERATION](#)

[COMMERCIAL FACILITY & OFFICE INVESTMENT AND OPERATION](#)

[SOC INVESTMENT](#)

HDC Hyundai Development Company has successfully completed multiple ultra-scale development projects, which began in 1975, starting with the Apgujeong Hyundai Apartment Complex. In addition to world-class development capabilities, we have operational expertise in a range of areas such as hotel & resort development and operation and commercial facility & office investment and operation. We are also highly involved in SOC private investment projects. As well as development and operation, we are actively expanding our scope to encompass building, infrastructure, and convergence projects in terms of urban development. By doing so, we will further elevate our status as the best real estate and infrastructure developer in Korea.

DEVELOPMENT & OPERATION

HDC Hyundai Development Company transforms the city landscape and raises the standard of living through future city platform projects that encompass the development of large urban complexes, private cities and multi-purpose complexes. In the development and operation of hotels and resorts, commercial facilities and offices, we offer unique experience through our state-of-the-art facilities with customer-oriented service. In addition, our proven technology and outstanding business capability successfully fulfill various SOC private investment projects, playing a major role in national development.

01



01 Apgujeong Hyundai Apartment Complex

LOCATION_ Gangnam-gu, Seoul
SCALE_ 1-story basement, 15-story building, 6,148 households
CONSTRUCTION PERIOD_ Mar. 1975 – Apr. 1987

02 Suwon IPARK CITY (Private city development)

LOCATION_ Gwonseon-gu, Suwon, Gyeonggi
SCALE_ Total of 993,791m², including 6,658 households, 2.5km of ecological streams, 469,391m² of neighborhood parks, urban infrastructure, and more
CONSTRUCTION PERIOD_ Aug. 2009 – Dec. 2020 (Scheduled)

03 Haeundae IPARK (Multi-purpose complex development)

LOCATION_ Haeundae-gu, Busan
SCALE_ 511,805m², including 1,631 households, commercial facilities and city parks
CONSTRUCTION PERIOD_ Jan. 2008 – Mar. 2013

04 PARK ROCHE Resort & Wellness

LOCATION_ Jeongseon-gun, Gangwon
SCALE_ Total of 31,379.7m², with 2-story basement, 12-story building (204 rooms)
CONSTRUCTION PERIOD_ Aug. 2016 – Nov. 2017

03



02



FUTURE CITY PLATFORM

- Haeundae IPARK (Multi-purpose complex development)
- Suwon IPARK CITY (Private city development)
- Apgujeong Hyundai Apartment Complex
- Bundang New Town Model Complex (Design competition top prize winner)
- Hwaseong New Town Model Complex (Design competition top prize winner)
- Cheongju Gagyeong IPARK (Town-type city development)
- Daejeon Doan IPARK CITY (Town-type city development)
- Yeongtong IPARK Castle (Town-type city development)

HOTEL & RESORT DEVELOPMENT & OPERATION

- PARK ROCHE Resort & Wellness
- PARK HYATT BUSAN Hotel
- PARK HYATT SEOUL Hotel
- IPARK Condominium
- Oak Valley Zone 1 Golf Course

04



COMMERCIAL FACILITY & OFFICE
INVESTMENT & OPERATION

- IPARK Tower
- Yongsan IPARKMALL (Yongsan private-invested station)
- Haeundae IPARK (Commercial facility)
- Suwon IPARK CITY (Commercial facility)

INVESTMENT ON SOC

- Busan New Port (Phases 2-3, Phases 2-4)
- Busan Harbor Bridge
- Seoul-Chuncheon Expressway
- Suseok-Hopyeong Expressway
- Ulsan New Port (Phase 1-1), private investment project
- Masan Port (Phase 1-1), private investment project
- Gimhae Light Rail transit, private investment project
- Daegu Art Museum
- Pyeongtaek Port east dock, private investment project
- New Daegu-Busan Expressway

01



COMMERCIAL FACILITY & OFFICE

- 01 Yongsan IPARKMALL**
(Yongsan private-invested station)
- LOCATION_ Yongsan-gu, Seoul
- SCALE_ 97,851.68m², including 1-story basement, 8-story building
- CONSTRUCTION PERIOD_ Oct. 2000 – Apr. 2005
- 02 IPARK Tower**
- LOCATION_ Gangnam-gu, Seoul
- SCALE_ 26,331m², including 4-story basement, 15-story building
- CONSTRUCTION PERIOD_ Sept. 2002 – Nov. 2004

INVESTMENT ON SOC

- 03 Busan Harbor Bridge**
- LOCATION_ Cheonghak-dong, Yeongdo-gu, Busan
– Gamman-dong, Nam-gu, Busan
- SCALE_ Length 3,368m (1,114m cable-stayed bridge, 2,254m approach bridge), 18.6-28.7m wide, 4-6 lane roads
- CONSTRUCTION PERIOD_ Apr. 2007 – May 2014
- 04 Seoul-Chuncheon Expressway**
- LOCATION_ Hail-dong, Gangdong-gu, Seoul – Joyang-ri, Dongsan-myun, Chuncheon, Gangwon
- SCALE_ 61,410m (53 bridges with a total length of 9,236m, 21 tunnels with a total length of 15,545m)
- CONSTRUCTION PERIOD_ Aug. 2004 – Aug. 2009
- 05 Busan New Port**
(Phases 2-3 container terminal)
- LOCATION_ North Sea area at Gadeokdo Gangseo-gu, Busan
- SCALE_ 840,000m² site renovation, container pier for four 50,000-ton berths
- CONSTRUCTION PERIOD_ Nov. 2007 – Nov. 2011
- 06 Masan Port (Phase 1-1), Private investment project**
- LOCATION_ Masan-si, Gyeongnam
- SCALE_ 1,300m quay for five berths, office buildings
- CONSTRUCTION PERIOD_ Dec. 2005 – Dec. 2011



04



05

02 03



06



HOUSING

LIFESTYLE COORDINATOR

APARTMENT, STUDIO APARTMENT & RESIDENTIAL COMPLEX

PRIVATE LEASE

URBAN RENOVATION

HDC Hyundai Development Company has driven the Korean residential culture through the commitment of building 400,000 apartment units for over the past 40 years. Our strong brand equity enables us to play a leading role in all areas of housing including apartments, studio apartments, residential complexes, as well as the private lease business and urban renovation projects. With the pride of being recognized as the top residential brand in Korea, we create a unique lifestyle for IPARK.

HOUSING

Through the strength of our brand and world-class construction capability, we have the industry's greatest competitive edge in the housing construction business. Located in major cities across the nation, IPARK is loved as a luxurious residential complex complete with efficient use of space, rich green areas, and state-of-the-art facilities. Starting with Dongtan LakePark IPARK and Gocheok IPARK and Ilsan IPARK 2, we continue to build our reputation as we expand into new businesses such as private leasing.

01



03



02



04



APARTMENT, STUDIO APARTMENT & RESIDENTIAL COMPLEX

- Samseongdong IPARK
- Daegu Wolbae IPARK (Blocks 1 and 2)
- Wirye IPARK (Blocks 1 and 2)
- Eunpyeong New Town IPARK
- Deokso IPARK
- Masanman IPARK
- Sokcho Cheongho IPARK
- Byeollae IPARK SUITE (Serviced residence)
- Unjeong IPARK
- IPARK Forest Gate (Studio apartment)
- Songpa IPARK (Studio apartment)
- Songdo American Town IPARK

PRIVATE LEASE

- Ilsan IPARK 2
- Dongtan Lake Park IPARK

01 Masanman IPARK

LOCATION_ Masan-si, Gyeongsangnam-do
SCALE_ 6 buildings with 2 basements and a 36-story apartment, 780 households
CONSTRUCTION PERIOD_ June. 2007 – Apr. 2010

02 Daegu Wolbae IPARK (Block 2)

LOCATION_ Dalseo-gu, Daegu
SCALE_ 19 buildings with 2 basements and a 29-story apartment, 2,134 households
CONSTRUCTION PERIOD_ Sept. 2013 – Jun. 2016

03 Samseongdong IPARK

LOCATION_ Gangnam-gu, Seoul
SCALE_ 3 buildings with 3 basements and a 46-story apartment, 449 households
CONSTRUCTION PERIOD_ Aug. 2001 – May 2004

04 IPARK Forest Gate (Studio apartment)

LOCATION_ Eunpyeong-gu, Seoul
SCALE_ 4 basements and a 27-story apartment, 814 households
CONSTRUCTION PERIOD_ Aug. 2011 – Nov. 2013

URBAN RENOVATION

We have generated a number of success stories among our urban renovation projects—such as redevelopment, reconstruction, and remodeling—which add new value to old spaces. We successfully redeveloped complexes across the major regions of the country, including Busan Myeongnyun IPARK, Samseongdong Central IPARK, and Cheongdam IPARK. By creating welcoming and beautiful residential spaces, we continue to improve the asset value for residents and boost the local economy.

URBAN RENOVATION

- Samseongdong Central IPARK
- Songpa Helio City
- Jamsil Olympic Park IPARK
- Godeok Central IPARK
- Cheongdam IPARK (Remodeling)
- Jamsil III's
- Daechi IPARK
- Godeok Forest IPARKS
- Seomyeon IPARK
- Sinchon Forest IPARK
- Dream Forest IPARK
- Sanseong Station FORESTIA
- Busan Myeongnyun IPARK
- Mudeungsan IPARK
- Mokdong Central IPARK
- Sagajeong Central IPARK
- Changwon Yongji IPARK
- Wolgye Central IPARK
- Dangsang Central IPARK
- Ahyeon IPARK
- Wangsimri TENSHELL

01



02



03



04



01 Busan Myeongnyun IPARK

LOCATION_ Dongnae-gu, Busan
SCALE_ 20 buildings with 3 basements and a 28-story apartment, 1,409 households
CONSTRUCTION PERIOD_ Jun. 2011 – Dec. 2013

02 Helio City

LOCATION_ Songpa-gu, Seoul
SCALE_ 84 buildings with 3 basements and a 10-to-35-story apartment, 1,409 households
CONSTRUCTION PERIOD_ Dec. 2015 – Dec. 2018

03 Samseongdong Central IPARK

LOCATION_ Gangnam-gu, Seoul
SCALE_ 4 buildings and a 31-story apartment, 416 households
CONSTRUCTION PERIOD_ Nov. 2015 – Mar. 2018

04 Jamsil Olympic Park IPARK

LOCATION_ Songpa-gu, Seoul
SCALE_ 7 buildings with 3 basements and a 35-story apartment, 697 households
CONSTRUCTION PERIOD_ Nov. 2016 – Nov. 2019

ARCHITECTURE SPACE BUILDER

OFFICE / COMMERCIAL BUILDING & HOTEL / EDUCATION FACILITY & HOSPITAL
CULTURAL & SPORTS FACILITY / FACTORY & OTHERS

HDC Hyundai Development Company uses architecture to reshape the city's skyline and reimagine the way spaces are used through creativity and innovation. With our differentiated set of capabilities—such as stunning design, superior technology, and deep expertise—we are transforming the world by building landmarks that reflect the times and represent the region. We continue to pave the way as we create a future where the positive effects of architecture will enrich people's lives.



OFFICE

The office buildings we have built, which include the Gangnam Finance Center and MBC New Building, are now recognized as the representative landmarks for that region. Our efficient design—which reflects a harmonious balance between form and function, as well as showcases the latest in construction technology and engineering—delivers a pleasant and smart working environment.

OFFICE

- Korea East-West Power Headquarters
- MBC New Headquarters
- Daum Communications Headquarters
- Hyundai Marine & Fire Insurance Gwanghwamun Headquarters remodeling
- Gangnam Finance Center (I-TOWER)
- Daejeon City Hall

01



03



02



04



01 Gangnam Finance Center (I-TOWER)

LOCATION_ Gangnam-gu, Seoul
SCALE_ Total 212,578m², including 8 basements and a 45-story building
CONSTRUCTION PERIOD_ 1995 – Jul. 2001

02 Daum Communications Headquarters

LOCATION_ Jeju-si, Jeju
SCALE_ Total 9,184m², including 1 basement and a 5-story building
CONSTRUCTION PERIOD_ Dec. 2009 – Apr. 2012

03 MBC New Headquarters

LOCATION_ Mapo-gu, Seoul
SCALE_ Total 150,000m², including 3 basements and a 14-story building
CONSTRUCTION PERIOD_ Jun. 2010 – Jul. 2013

04 Daejeon City Hall

LOCATION_ Seo-gu, Daejeon
SCALE_ Total 86,214.55m², including 2 basements and a 21-story building
CONSTRUCTION PERIOD_ Mar. 1995 – Dec. 1999

COMMERCIAL BUILDING & HOTEL

Our distinctive competitiveness is what enabled us to build a range of highly successful commercial facilities, such as shopping malls and department stores.

We have also built a number of unique hotels that reflect our desire to push the limits of innovation, including Hotel SIRIUS and RYSE Hotel, while enhancing the city's reputation and offering a lifestyle of leisure.

COMMERCIAL BUILDING & HOTEL

- The Hyundai - Cheonho store (Building extension)
- The Hyundai - Trade center store (Building extension)
- Hyundai Homeshopping (Building extension)
- Starfield COEXMALL
- RYSE Hotel
- Hotel SIRIUS
- Ibis Ambassador Seoul Insadong
- Mercure Ambassador Seoul Gangnam Sodowe

01 Hotel SIRIUS

LOCATION_ Jeju-si, Jeju
SCALE_ Total 19,147.7m², including 1 basement and a 10-story building (280 rooms)
CONSTRUCTION PERIOD_ Jul. 2014 – Sept. 2017

02 Starfield COEXMALL

LOCATION_ Gangnam-gu, Seoul
SCALE_ COEX extension, major repair and usage change construction
CONSTRUCTION PERIOD_ Apr. 2013 – Dec. 2014

03 HYUNDAI DEPARTMENT STORE TRADE CENTER

LOCATION_ Gangnam-gu, Seoul
SCALE_ Total 42,307m²
CONSTRUCTION PERIOD_ Dec. 2009 – Aug. 2013



EDUCATION FACILITY & HOSPITAL

By building educational and training facilities for the most prestigious Korean universities, such as Seoul National University and Korea University, we directly contribute to the nurturing of human resources for the national and industrial sectors. We have also built some of the best medical facilities in Korea—including the research lab in Asan Medical Center, Gangneung Asan Hospital, and Ulsan University Hospital Cancer Center—which showcase our unique expertise in the category.

EDUCATION FACILITY & HOSPITAL

- Seoul National University (College of Agriculture and Life Sciences)
- Seoul National University (Kyujanggak Institute for Korean Studies)
- Hankuk University of Foreign Studies (Yongin Dormitory)
- Sungshin University Woonjung Green Campus
- Hyundai Marine & Fire Insurance (Geumsan Training Institute)
- Masan National Tuberculosis Hospital
- Gangneung Asan Hospital
- Ulsan University Hospital Cancer Center
- Asan Medical Center (The second research lab)



01 Ulsan University Hospital Cancer Center

LOCATION_ Dong-gu, Ulsan
SCALE_ Total 71,454.9m², including 2 basements and a 8-story building (528 beds)
CONSTRUCTION PERIOD_ Nov. 2010 – Jun. 2013

02 Asan Medical Center (The second research lab)

LOCATION_ Songpa-gu, Seoul
SCALE_ Total 55,479.6m², including 4 basements and a 16-story building
CONSTRUCTION PERIOD_ Jul. 2009 – Dec. 2012

03 Gangneung Asan Hospital

LOCATION_ Gangneung-si, Gangwon
SCALE_ Total 24,851m², including 2 basements and a 10-story building (870 beds)
CONSTRUCTION PERIOD_ Feb. 2014 – Aug. 2015

CULTURAL & SPORTS FACILITY

Capitalizing on our unique design sense, we have established an unrivaled reputation by building a variety of cultural and sports facilities. The Suwon IPARK Museum of Art, Daejeon World Cup Stadium, and Gocheok Sky Dome are just a few of our achievements in the construction of high-end cultural and sports facilities, which enable people to fulfill their passion for culture and sports like never before.

CULTURAL & SPORTS FACILITY

- Uijeongbu Sports Complex
- Haevichi Country Club JEJU
- Jeju Pinx Biotopia Townhouse
- CGV Apgujeong
- Jeju Teddy Bear Museum
- Chuncheon Culture & Arts Center
- Namdo National Gugak Center
- HHI Culture & Arts Center
- Gocheok Sky Dome
- Suwon IPARK Museum of Art (SIMA)
- Daejeon World Cup Stadium
- Jeonju Indoor Ice Rink
- Suwon Convention Center

01 Gocheok Sky Dome

LOCATION_ Guro-gu, Seoul

SCALE_ Total 83,476m², including 2 basements and a 4-story building (18,076 seats)

CONSTRUCTION PERIOD_ Mar. 2009 – Nov. 2015

02 Daejeon World Cup Stadium

LOCATION_ Yuseong-gu, Daejeon

SCALE_ Total 100,454.70m², including 1 basement and a 5-story building (41,651 seats)

CONSTRUCTION PERIOD_ Dec. 1998 – Sept. 2001

03 Suwon IPARK Museum of Art (SIMA)

LOCATION_ Paldal-gu, Suwon, Gyeonggi

SCALE_ Total 9,652m², including 1 basement and a 2-story building

CONSTRUCTION PERIOD_ Dec. 2013 – Oct. 2015



01



02



03

FACTORY & OTHERS

Our world-class technology and high-quality construction capabilities are attracting the attention of companies looking to build factories which drive industries.

In addition to the HDC Hyundai EP Dangjin Plant, we have built factories equipped with high-tech automation facilities and affiliated facilities across a diverse set of industries, such as chemical, paper mill, steel, pharmaceutical, and more.

FACTORY & OTHERS

- Moorim P&P Integrated Mill
- HDC Hyundai EP Dangjin Plant
- Hyundai Heavy Industries Yongyeon Plant
- Saehan Gumi Plant
- Dongwha Pharmaceutical Chungju Plant
- HDC Hyundai EP Ulsan EPS Plant (Line extension)
- HDC Hyundai PCE Yeosu Plant

01



02



03



01 HDC Hyundai EP Dangjin Plant

LOCATION_ Dangjin-si, Chungnam

SCALE_ Total 18,131.54m², including a 2-story office building; 1 basement and a 5-story production building

CONSTRUCTION PERIOD_ Feb. 1994 – Oct. 1994

02 HDC Hyundai PCE Yeosu Plant

LOCATION_ Yeosu-si, Gyeonggi

SCALE_ Total 9,652m², including 1 basement and a 2-story building

CONSTRUCTION PERIOD_ Jul. 1990 – May 1993

03 HDC Hyundai EP Ulsan EPS Plant (Line extension)

LOCATION_ Nam-gu, Ulsan

SCALE_ EPS Plant Line 1 expansion (20,000 ton/year)

CONSTRUCTION PERIOD_ Feb. 2013 – Apr. 2014

INFRASTRUCTURE DEVELOPMENT

VALUE
CREATOR

ROAD & BRIDGE / RAILROAD & SUBWAY / PLANT / MARINE STRUCTURE, HARBOR & OTHERS

HDC Hyundai Development Company has successfully accomplished a variety of infrastructure development projects, contributing to the development of the industry and the nation. Within the plant industry, we deliver a comprehensive suite of business capabilities across power generation and the environment. We also helped to raise the value of the nation by building roads, bridges, railways, subways, marine structures, and harbor facilities utilizing our world-class technology and high-quality construction capabilities.



ROAD & BRIDGE

When it comes to roads and bridges, the combination of our accumulated technology and various experiences, has enabled us to develop our proprietary design, construction, and management capabilities when it comes to roads and bridges. By building high-quality major national expressways and local roads that are also aesthetically pleasing, we help to transport people and goods, while connecting regional areas which contribute to the balanced development of local communities and the improvement of daily life.

ROAD & BRIDGE

- Road from Hwayang to Jukgeum (District 3)
- Gangnam Beltway (Private sector investment project, District 7-1)
- 12th Expressway from Damyang to Seongsan (Districts 5 and 9)
- Road from Seongnam to Janghowon (District 1)
- 40th Expressway from Eumseong to Chungju (District 3)
- Yanghwa Bridge
- Nambu Beltway from Bucheon to Sigye
- 10th Expressway from Mokpo to Jangheung (District 1)

01 Road from Hwayang to Jukgeum (District 3)

LOCATION_ From Jobal-ri, Hwajeong-myeon, Yeosu-si, Jeollanam-do to Nangdo-ri, Hwajeong-myeon, Yeosu-si, Jeollanam-do

SCALE_ 3,899m in length
(2 bridges of 1,630m and 1 tunnel of 364m)

CONSTRUCTION PERIOD_ Dec. 2011 – Dec. 2019

02 Yanghwa Bridge

LOCATION_ From Hapjeong-dong, Mapo-gu, Seoul to Yangpyeong-dong, Yeongdeungpo-gu, Seoul

SCALE_ 1,053m in length, 16.1m in width, 8-lane roads

CONSTRUCTION PERIOD_ Jan. 2010 – Oct. 2012

03 40th Expressway from Eumseong to Chungju (District 3)

LOCATION_ From Yungnyeong-ri, Geumwang-eup, Eumseong-gun to Sinni-myeon, Chungju-si, Chungbuk

SCALE_ 5,600m in length
(12 bridges of 1,359m and 1 tunnel of 212m)

CONSTRUCTION PERIOD_ Aug. 2007 – Aug. 2014



RAILROAD & SUBWAY

Railways and subways are not only a means for transportation, but also represent the lifeblood of our nation's industry. We play a major role in promoting regional economic growth and convenient transportation through the construction of strong and safe railway and subway systems throughout the country, including Suseo and Honam High-speed Railways, Seoul and Incheon Subways and connecting railways to Incheon International Airport Passenger Terminal 2.

RAILROAD & SUBWAY

- Incheon International Airport Passenger Terminal 2 (Connecting railways)
- Suseo High-speed Railways from Suseo to Pyeongtaek (Districts 6-2 and 4)
- Incheon Subway Line 2 (District 203)
- Honam High-speed Railway (District 3-4, roadbed and others)
- Seoul Subway Line 9 Phase 2 (District 916)
- Gyeongbu High-speed Railways from Seoul to Busan



01 Honam High-speed Railway (District 3-4, roadbed and others)

LOCATION_ Sang-ri, Baeksan-myeon and Seojeong-dong, Gimje-si, Jeonbuk

SCALE_ 10,980m in length (4 bridges of 6,302m and 1 tunnel of 225m)

CONSTRUCTION PERIOD_ Nov. 2009 – Apr. 2014

02 Incheon Subway Line 2 (District 203)

LOCATION_ Majeon-dong and Baekseok-dong, Seo-gu, Incheon

SCALE_ 2,500m in length (1 tunnel of 1,700m, 700m excavation and 2 terminals)

CONSTRUCTION PERIOD_ Jun. 2009 – Oct. 2016

03 Incheon International Airport Passenger Terminal 2 (Connecting railways)

LOCATION_ Incheon International Airport Passenger Terminal 2

SCALE_ 8,484m in length
(1 tunnel of 1,322m, 4,200m box)

CONSTRUCTION PERIOD_ Mar. 2013 – Sept. 2017

PLANT

From design to procurement, construction and trial run, our comprehensive set of capabilities covers the entire plant industry. We have built major thermal power plants around the country and are now recognized as a leading energy plant specialist in Korea.

We also demonstrate outstanding capabilities in the construction of environmental plants including sewage treatment facilities.

PLANT

- Taeon Thermal Power Plant (Units 9 and 10, electric generation construction)
- Korea District Heating Corp. Mapo Branch (Extension of cold water and air conditioning facility)
- Dongducheon Combined Cycle Power Plant
- Goseong Sewage Treatment Plant (Extension and advanced treatment system)
- Hadong Thermal Power Plant (Units 1 through 6, desulfurization facility construction)
- Tancheon Water Treatment Center (Extension)
- Samcheonpo Thermal Power Plant (Units 1 through 6, civil engineering and construction)
- Nowon Recycling Center

01 Dongducheon Combined Cycle Power Plant

LOCATION_ Dongducheon-si, Gyeonggi
SCALE_ Units 1 and 2 of the combined cycle power plant, 17 power transmission towers
CONSTRUCTION PERIOD_ Mar. 2012 – Mar. 2015

02 Taeon Thermal Power Plant (Units 9 and 10, electric generation construction)

LOCATION_ Taeon-gun, Chungnam
SCALE_ Thermal power plant with two units producing 1,050MW of power each, electric generation construction
CONSTRUCTION PERIOD_ Mar. 2013 – Apr. 2017

03 Samcheonpo Thermal Power Plant (Units 1 through 6, civil engineering and construction)

LOCATION_ Goseong-gun, Gyeongnam
SCALE_ 13,000m³/day
CONSTRUCTION PERIOD_
Oct. 1978 – Aug. 1983 (Unit 1), Feb. 1984 (Unit 2)
Oct. 1989 – Apr. 1993 (Unit 3), Mar. 1994 (Unit 4)
Mar. 1994 – Jul. 1997 (Unit 5), Jan. 1998 (Unit 6)



02



03

MARINE STRUCTURE, HARBOR & OTHERS

We have bolstered our national development and economic growth as we lead the industry in marine structure and harbor construction, with projects such as Masan Marine New Town, Ulsan New Port, Gunsan Shipyard, and Gyeongin Ara Waterway.

We are also leaders in the construction of automobile theme parks such as the BMW Driving Center.

MARINE STRUCTURE, HARBOR & OTHERS

- Gangwon Yeongjin-Gyohang Area Coastal Improvement Project
- Songdo Land Reclamation
- Ulsan New Port South Seawall (District 2-1)
- Saemangeum Waterproofing (Dongjin District 5)
- Masan Marine New Town
- BMW Driving Center
- Gunsan Shipyard Dock and Inner Wall
- Gyeongin Ara Waterway (District 5)
- Nakdong River Restoration Project (District 33)

01



02



03



01 BMW Driving Center

LOCATION_ Jung-gu, Incheon
SCALE_ Total 14,160m², including 10 buildings and a 3.2km test driving track
CONSTRUCTION PERIOD_ Jun. 2013 – Aug. 2014

02 Ulsan New Port South Seawall (District 2-1)

LOCATION_ Ulju-gun, Ulsan
SCALE_ 900m seawall and affiliated work
CONSTRUCTION PERIOD_ Dec. 2013 – Sept. 2016

03 Gunsan Shipyard Dock and Inner Wall

LOCATION_ Gunsan-si, Jeonnam
SCALE_ 840,000m² site renovation
CONSTRUCTION PERIOD_ May 2008 – Jan. 2010

OVERSEAS BUSINESS

GLOBAL LEADING DEVELOPER

Beginning with the Jizan Cement Plant construction in Saudi Arabia, the first turn-key project by a Korean company overseas, HDC Hyundai Development Company successfully conducted various projects including bridges, plants, ports, and environmental facilities. As a result, it has earned the trust of foreign clients and government institutions all over the world across Asia, the Middle East, South America, and Africa. Our steadfast and substantive project management know-hows and accumulated capabilities as a developer will lead the way into new successes in foreign real estate as well as infrastructure investment and development projects.



Banegas Bridge and Approach Road Project
LOCATION_ Calle 1, N170, Equipetrol, Santa Cruz, Bolivia
SCALE_ Bridge 1,440m, approach road 200m
CONSTRUCTION PERIOD_ Oct. 2014 – Sept. 2017

OVERSEAS BUSINESS PROJECTS

PLANTS & ELECTRICAL WORKS	COUNTRY	OWNER
• Al Jubail-Riyadh Line C Water Pumping Station	Saudi Arabia	Saline Water Conversion Corporation
• Bangkhen Water Treatment Plant	Thailand	Metropolitan Waterworks Authority
• Tihama Substation	Saudi Arabia	SEECO-South Saudi Consolidated Electricity Corporation
• Water Supply Project for Sudair Region	Saudi Arabia	Ministry of Agriculture and Water
• Josloc Lube Oil Blending Plant	Saudi Arabia	Aljomaih and Shell Lubricating Oil Company Limited
• Al Jubail Product Water, Blending & Distribution System	Saudi Arabia	Saline Water Conversion Corporation
• Jizan Cement Plant	Saudi Arabia	Southern Province Cement Company
• Farasan Desalination & Power Plant	Saudi Arabia	Saline Water Conversion Corporation
• SAFCO Sulphuric Acid Plant	Saudi Arabia	Petromin-Shell Refinery Company

CIVIL WORKS	COUNTRY	OWNER
• Hung-Ha Bridge and Approach Road	Vietnam	Ministry of Transportation
• Coastal Bridge and Road	India	Mumbai City
• Gore-Tepi Road	Ethiopia	Ministry of Transportation
• Design-Build Works for Banegas Bridge and Approach Road Construction Project	Bolivia	Administradora Boliviana de Carreteras (ABC)
• Sabah Rural Trunk Road Package B-2	Malaysia	Public Works Department
• Toll Expressway PJ Sec. 1.1 Ipoh to Sungai Perak	Malaysia	Malaysia Highway Authority
• Al Khamasin Tathleeth-Khamis Mushayt Road B-2	Saudi Arabia	Ministry of Communication and Information Technology
• Seawater Supply Return Canal No. 1	Saudi Arabia	Royal Commission for Jubail and Yanbu
• Al Qassim Industrial City, Phase 2 Development	Saudi Arabia	Ministry of Industry and Electricity
• Al Jubail Refinery Complex I	Saudi Arabia	Petromin-Shell Refinery Company
• Rural Roads & Bridges, Terengganu	Malaysia	Public Works Department

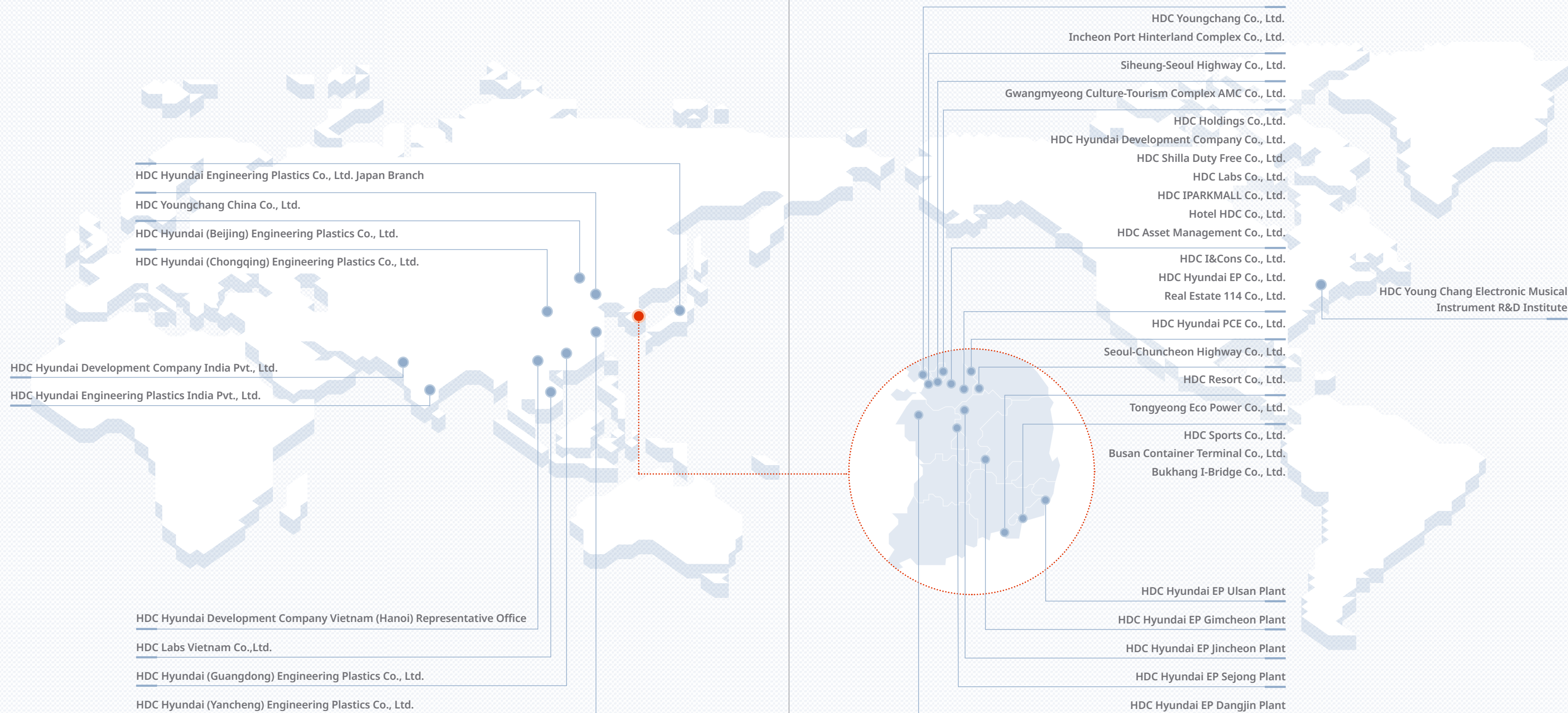
ARCHITECTURAL WORKS	COUNTRY	OWNER
• BSMMU Hospital	Bangladesh	BSMMU
• Kampong Beribi Gadong Staff House	Brunei	PG. Kembaludin
• ADC Offices Clubs Building & Earthworks	Saudi Arabia	Ministry of Defense and Aviation
• Sungai Perak Bridge, Teluk-Lumut Road, Perak	Malaysia	Public Works Department
• King Fahad Industrial Port Main Administration Building	Saudi Arabia	Sea Port Authority
• Public Housing Program Jeddah Site 2. Dist. 4	Saudi Arabia	Public Housing Authority
• Al-Jomaih Workshop Design	Saudi Arabia	A.A Mohamed A Jomain

- 01 Al Jubail Refinery Complex I**
LOCATION_ Al Jubail, Saudi Arabia
SCALE_ 250,000 barrel/day
CONSTRUCTION PERIOD_ Aug. 1979 – Jan. 1981
- 02 Sungai Perak Bridge**
LOCATION_ Perak, Malaysia
SCALE_ PC Box Girder Bridge, FCM
CONSTRUCTION PERIOD_ Apr. 1986 – Nov. 1988
- 03 Jizan Cement Plant**
LOCATION_ Jizan, Saudi Arabia
SCALE_ 1,500,000 ton/day
CONSTRUCTION PERIOD_ Dec. 1977 – Jan. 1981
- 04 Hung Ha Bridge Construction**
LOCATION_ Hung Yen, Vietnam
SCALE_ FCM Bridge, Super-T Bridge, Approach Road
CONSTRUCTION PERIOD_ May. 2016 – Jun. 2019



HDC NETWORK

The HDC Group invests in companies and projects in the mid to long-term across a variety of different fields including finance and management, real estate development, social overhead capital, technology advanced materials, and culture and content. Our affiliates, armed with a strong edge in their respective fields, cooperate and grow together and will stay a step ahead in achieving the life of everyone's dreams.



HDC AFFILIATES

HDC HOLDINGS www.hdc-holdings.com

HDC unearths new opportunities for value investment and pursues growth of brand value through a portfolio strategy that strengthens capabilities and synergy between our affiliates. Furthermore, the HDC Group provides a total solution based on our management expertise and credibility in securing networks across various industries and facilitating sustainable growth.

HDC HYUNDAI EP www.hdc-hyundaiep.com

A specialist in high-tech engineering plastic materials, HDC Hyundai EP holds the largest market share in composite polypropylene for Korean-manufactured automobiles. Capitalizing on our world-class technology, we actively advance into areas, such as functional polymer and new materials, as we grow into a global specialty company.

HDC LABS www.hdc-labs.com

HDC Labs provides Smarterior and facility management solutions by combining the AIoT technology capability accumulated in the fields of smart homes and buildings with expertise in comprehensive real estate management, landscaping, and interior. HDC Labs aims to advance as a space AIoT platform enterprise that defines new space, life, and the future by providing a digital-based service that ties mastery in construction and maintenance with technical strength and data.

HDC IPARKMALL www.hdc-iparkmall.com

HDC IPARKMALL, based on the concept of “Urban Nature” meaning “city center” and “nature”, is a multi-shopping place where people can take a rest and relax in nature in the middle of their busy lives. HDC IPARKMALL is a leader in creating new trends of multi-shopping malls where urbanites can not only experience the nature environment, which is not easy to find in the city, but also enjoy their new entertainment and dining experiences.

HDC RESORT www.hdc-resort.co.kr

HDC Resort operates Oak Valley; the largest single resort in Korea, PARK ROCHE Resort & Wellness; a wellness-oriented resort, and IPARK Condominium; a family resort. HDC Resort plans to lead the hospitality and leisure business by establishing Korea’s first golf resort with a 90-hole course and also developing and operating a premium resort complex.

HDC YOUNGCHANG www.hdc-youngchang.com

As a comprehensive music company and Korea’s first piano manufacturer, HDC Youngchang produces pianos, electronic musical instruments, orchestral Instruments, and sound systems. Leveraging our accumulated capabilities and global network, we will grow to become a global company that facilitates the expansion of a music-loving lifestyle and a variety of cultural contents.

HDC HYUNDAI DEVELOPMENT COMPANY www.hdc-dvp.com

HDC Hyundai Development Company is committed to raising the profile of Korea’s architectural culture globally. With the launch of IPARK, we established a new era for branded apartments. In addition to a wide range of architectural projects, we have successfully completed projects with a focus on infrastructure, plant, development and operation—at home and abroad. With all our experiences and expertise, we are making our lives more comfortable and enriched.

HDC I&CONS www.hdc-incons.com

HDC I&Cons operates both residential projects (IPARK apartments and officetels, residential complexes) and non-residential real estate development projects. HDC I&Cons continues to pursue new challenges to become the leading developer with professional know-hows and technological insights based on a variety of its own development experiences over the last 20 years.

HOTEL HDC www.hdc-hotel.com

Hotel HDC operates Park Hyatt Seoul and Busan, as well as Andaz Seoul Gangnam under contract. It also operates Park Roche, a premium wellness resort, and IPARK Condominium. Under the service philosophy of providing long-lasting experiences in our guests’ mind, Hotel HDC pursues leading the hospitality industry through developing new hotels and condominiums.

HDC SPORTS www.hdc-sports.com

Busan IPARK Football Club, a professional soccer team run by HDC Sports, is a prestigious club that has accomplished a number of outstanding achievements and has built up its reputation for over 30 years since its founding in 1983. In addition to focusing on promoting Busan IPARK Football Club as the top soccer team, we made a number of efforts to foster professional and youth players and to develop a sports culture that bolsters the foundation for soccer.

HDC SHILLA DUTY FREE www.hdcshilla.co.kr

Established as a joint venture between HDC Group and the Shilla Hotels & Resorts, HDC Shilla Duty Free operates the Shilla IPARK Duty Free Shop—Korea’s largest urban duty-free shop. Located in Yongsan IPARKMALL, the shop delivers a new tourist shopping experience that combines culture, leisure, and lifestyle spread across a total of 600 famous brand-name stores.

HDC HYUNDAI PCE www.hdc-pce.com

A precast concrete producer, HDC Hyundai PCE manufactures high-quality products in terms of soundproofing, insulation, earthquake resistance, and price competitiveness. We produce precast concrete at a dedicated factory and supply it to construction sites nationwide. We will further strengthen our expertise and experience—gained from a diverse range of construction projects—to become Korea’s leading precast concrete specialist.

HDC ASSET MANAGEMENT www.hdcasset.com

HDC Asset Management is an asset management company with a competitive edge and an objective and systematic management process. It manages client assets in a safe and transparent manner through preventative management. HDC Asset Management works arduously to maximize values for clients through the best products and services, alternative investment and contributing to the growth of real estate financing in step with the evolving financial market.

REAL ESTATE 114 www.r114.com

Real Estate 114 not only provides information on real estate sales, price levels, columns, and sales report but also provides REPS, a unique real estate statistics solution, in Korea and K-Atlas, a region-based data collection and analysis service. Real Estate 114 provides a comprehensive solution and service for residential and commercial real estates. It will grow into a real estate big data platform company that assists with real estate transactions and prudent investments.

SEOUL-CHUNCHEON HIGHWAY www.schighway.co.kr

The Seoul-Chuncheon Highway, the first private proposal project, is a privately funded, 61.4km expressway that connects Seoul and Chuncheon. As an environment-friendly expressway and the shortest route from the Greater Seoul Metropolitan Area to Gangwon-do and the East Coast, the Expressway contributes to the balanced development of South Korea. With user convenience and safety at the highest priority, we will continue to work to make a more comfortable and safer expressway.

SIHEUNG-SEOUL HIGHWAY

The Siheung-Seoul Highway BTO is a 4.88km, 4-lane road construction project that will produce the closets route from central Seoul to Siheung based on a total investment of 252.6 billion KRW (approx.. 212 million USD). Upon completion, the Expressway will significantly alleviate traffic delays and jams between the 2nd Gyeongin Expressway’s Sincheon Interchange and the Seoul Ring Expressway’s Siheung Interchange. It will thus contribute to not only the competitive edge of the southwestern portions of the Greater Seoul Metropolitan Area but also the competitive edge of South Korea itself.

GWANGMYEONG CULTURE-TOURISM COMPLEX AMC

Gwangmyeong Culture-Tourism Complex Asset Management is a corporation established on February 21st, 2020 as a public-private (Gwangmyeong GMUC, NH Investment & Securities Consortium) joint investment for the successful implementation of the urban development project by Gwangmyeong GMUC and private entities. Gwangmyeong Culture-Tourism Complex Asset Management is in charge of asset management and project implementation for the Gwangmyeong Culture-Tourism Complex, and it has its sights set on creating a nature-friendly and sustainable healing-themed tourist destination and the successful pursuit of the project itself.

BUKHANG I-BRIDGE www.bukhangbr.com

Bukhang I-Bridge manages and operates the Busan Harbor Bridge, the 3.3km long, privately funded cable-stayed bridge that connects Busan’s Nam-gu to Youngdo-gu. It contributes to the enhancement of South Korea’s competitive edge by significantly reducing the scale of frequent traffic jams within the city center and thereby reducing time demand and logistical costs. We will do our best to provide a comfortable and safe road experience for all users of Busan Harbor Bridge.

BUSAN CONTAINER TERMINAL

The Busan Container Terminal is a company established for designs, construction, management, and maintenance of the Busan New Port Phase 2-4. The company will take advantage of being located at the entrance of seaway point to the Busan New Port, satisfactory depth for large vessels, and the modernized automatic terminal. Based on these factors, our distinguished operations will allow us to grow into a global port operations company.

TONGYEONG ECO POWER

Based on the Basic Plan on Electricity Demand and Supply, Tongyoung Eco Power was established as an independent power project corporation on May 27th, 2013. Its purpose was to construct and operate a 1GW power facility that uses LNG, a clean source of energy, in a 65-acre plot in Gwangdo-myeon, Tongyoung-si, Gyeongsangnam-do. In addition to the successful conduct of environment-friendly power generation, we look forward to expanding our business portfolio to major LNG storage facility projects and global energy trading.

INCHEON PORT HINTERLAND COMPLEX

The Incheon Port Hinterland Complex is a company established to pursue the development project of the Incheon Port hinterland complex (phase 1, area 2), a type 1 port hinterland complex, through private development. We will contribute to the growth of the port logistics industry by supplying a top-grade port hinterland complex on schedule and hosting high-value logistics and manufacturing companies.

The faith in a better future is the driving force behind HDC Hyundai Development Company. With a strong, yet human-centric approach, we are the engine driving change and continue to innovate and challenge the status quo.

We are dedicated to improving customer satisfaction and emotional impact, while fulfilling our role as a dutiful corporate citizen.

The more we embrace our passion and accumulate experience, the closer we get to realizing our vision for an affluent life and reliable world. With a firm belief in a better life, we will continue to move on toward a prosperous future for all.

www.hdc-dvp.com

The faith in a better future is the driving force behind HDC Hyundai Development Company. With a strong, yet human-centric approach, we are the engine driving change and continue to innovate and challenge the status quo. We are dedicated to improving customer satisfaction and emotional impact, while fulfilling our role as a dutiful corporate citizen. The more we embrace our passion and accumulate experience, the closer we get to realizing our vision for an affluent life and reliable world. With a firm belief in a better life, we will continue to move on toward a prosperous future for all.

www.hdc-dvp.com

Faith in a Better Future **HDC**